

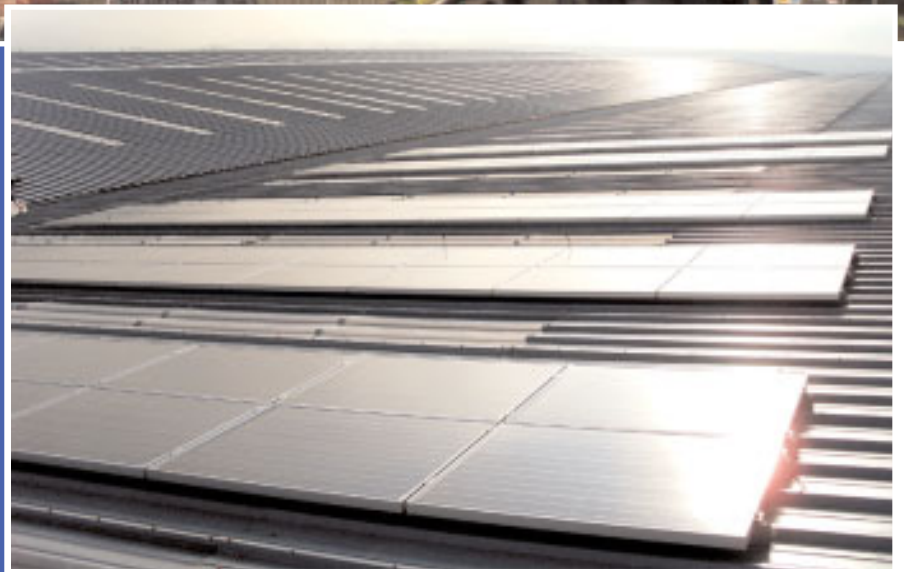
# Case Study

## 15kWp Warehousing

**Client**  
Bowmer & Kirkland

**Construction type**  
1.3million ft<sup>2</sup>  
Sheet steel clad warehousing

1.3million ft<sup>2</sup>  
Denby, Derbyshire



### Objective

To generate 10% of electricity from on site renewable source.

### Solution

After a rigorous tendering process South Facing were selected to install a 14.5kWp roof mounted PV system. South Facing were also able to advise the client enabling them to maximise their budget.

### System details

#### Modules-

90x Sharp 162Watt poly crystalline modules

#### Inverters - 3x Fronius IG40

Total System Output 14.5kWp

### Result

Despite weather delays the installation was completed and commissioned on time and with out interruption to the build programme



**South-facing**  
Solar PV Installers & Distributors



No.1  
Whitehouse Farm Business Centre  
Hemel Hempstead  
Herts HP2 6HG

01582 840445  
info@south-facing.co.uk  
www.south-facing.co.uk