

Case Study

12.2kWp Industrial

Luton, Bedfordshire

Client

Jarvis Contracting

Construction type

Sheet steel clad Industrial unit

Objective

To generate 10% of electricity from on site renewable source.

Solution

2x 6.1kWp roof mounted PV system

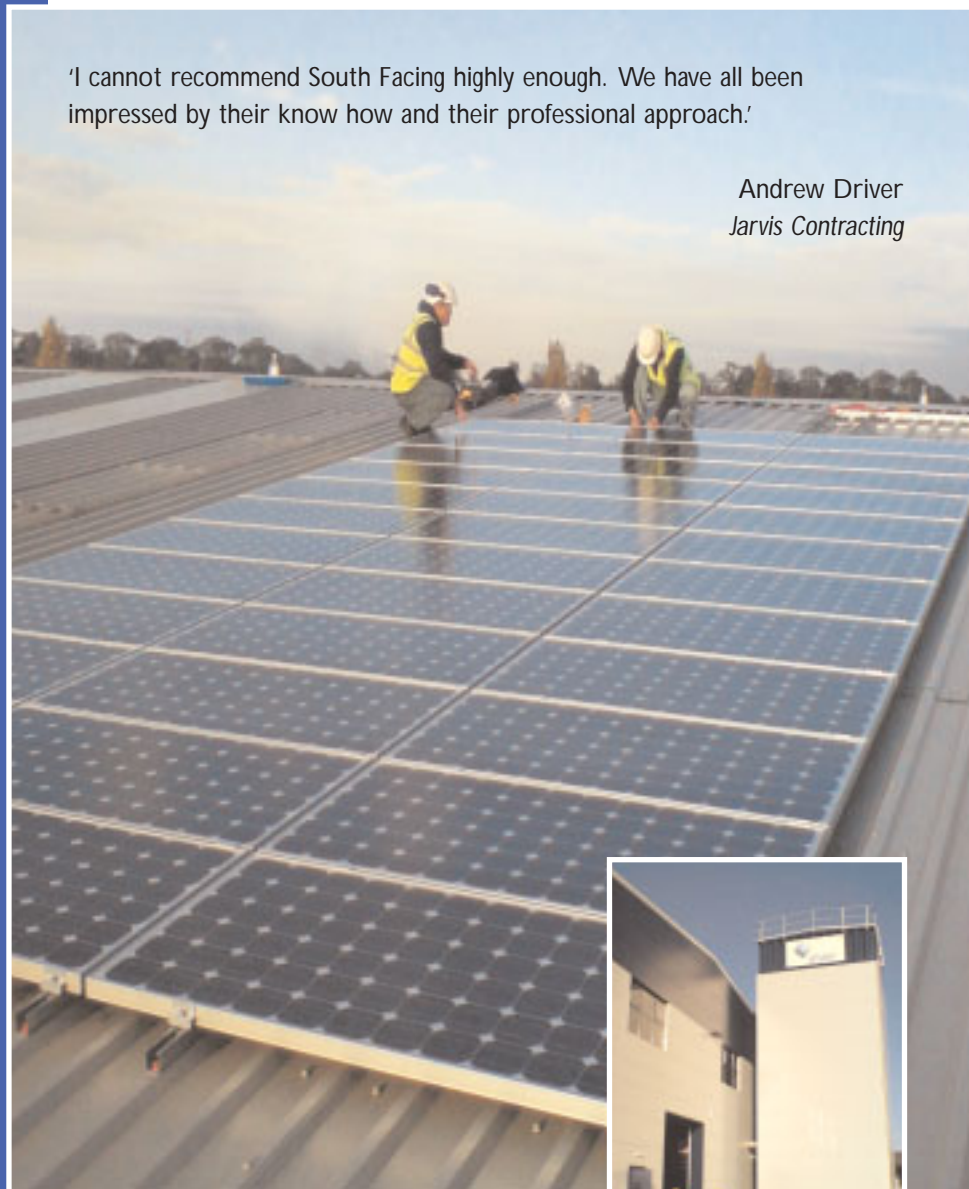
System details

Modules-

2x arrays consisting
36x Trina 170Watt mono crystalline
modules each

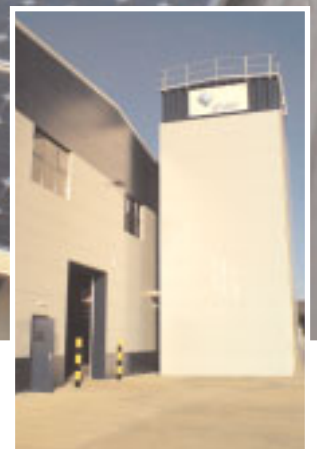
Inverters - 2x Fronius IG60

Total System Output **12kWp**



'I cannot recommend South Facing highly enough. We have all been impressed by their know how and their professional approach.'

Andrew Driver
Jarvis Contracting



Result

Although both units were to be occupied one tenant 2 separate systems were required - one for each unit. so that if the occupant moved on the building could be divided in to two units each with its own PV system



South-facing
Solar PV Installers & Distributors



No.1
Whitehouse Farm Business Centre
Hemel Hempstead
Herts HP2 6HG

01582 840445
info@south-facing.co.uk
www.south-facing.co.uk

